

# PPM robotics

*.....because true elderly care can't be achieved by humans alone.....*



PPM is a high-tech company that offers **innovative service robot solutions** for nursing homes. PPM's market-leading service robots are based on well-established industrial technology, monitored by an ethology-based control system, to achieve reliable, user-friendly robots that act in harmony with patients and caregivers.

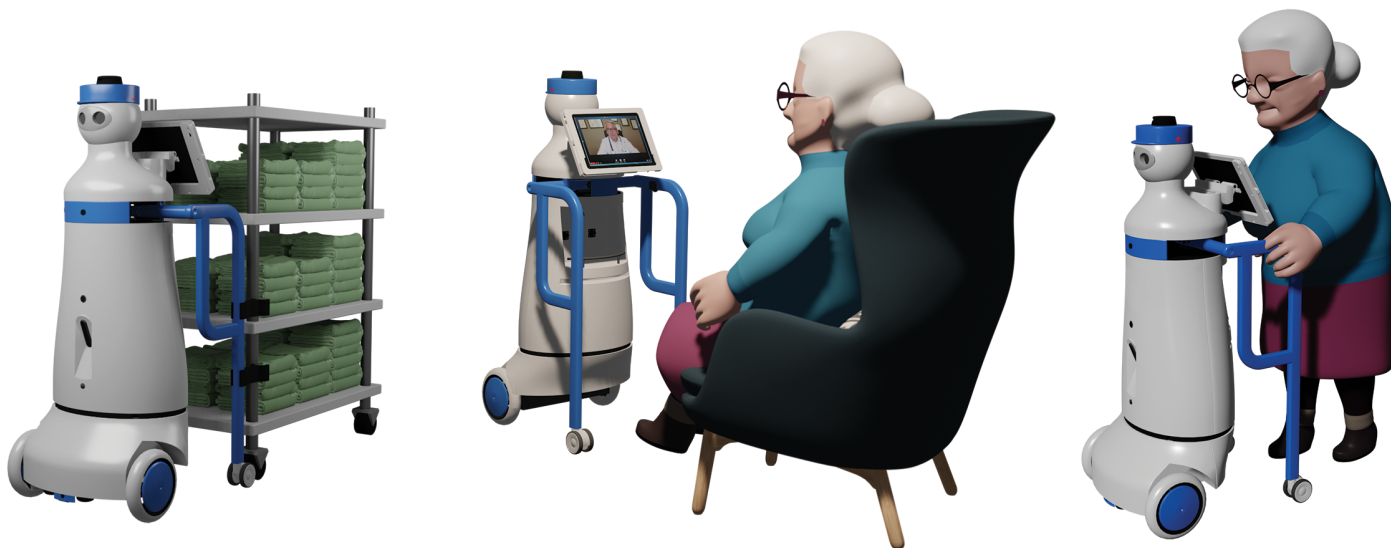
From our **20 years of experience** from demanding robot projects, we guide our customers through a structured deployment process, ensuring a successful operation of the service robots from the done one!

Our experience from demanding industrial projects offers you, as end-customer, to **join** our structured approach ensuring **successful deployment** of the most beneficial service robot solutions on the market.

## Sounds interesting?

Get in touch with us at: [info@ppm.no](mailto:info@ppm.no)

## What can a **service robot** offer?



### Main purposes

- The robot is a facilitator, increasing the staff's available time for care and medical treatment
- The robot offloads the staff from heavy, repetitive, boring work
- The robot enhances the continuity of day and night observations
- The robot provides individualized activation, entertainment and communication
- The robot is a flexible and easily scalable 24/7 resource for the nursing home



### What can a service robot do?

- Transport and logistics
- Food and drink services
- Guiding of the patients to their rooms, the kitchen or the sitting room
- Physical training and walking support
- Negotiator / diverter in difficult patient relationships
- Remote services for patients in quarantine
- Multimedia messaging and telecommunication
- Entertainment and mental training
- Day and night watch
- Structured reports of the patients' condition